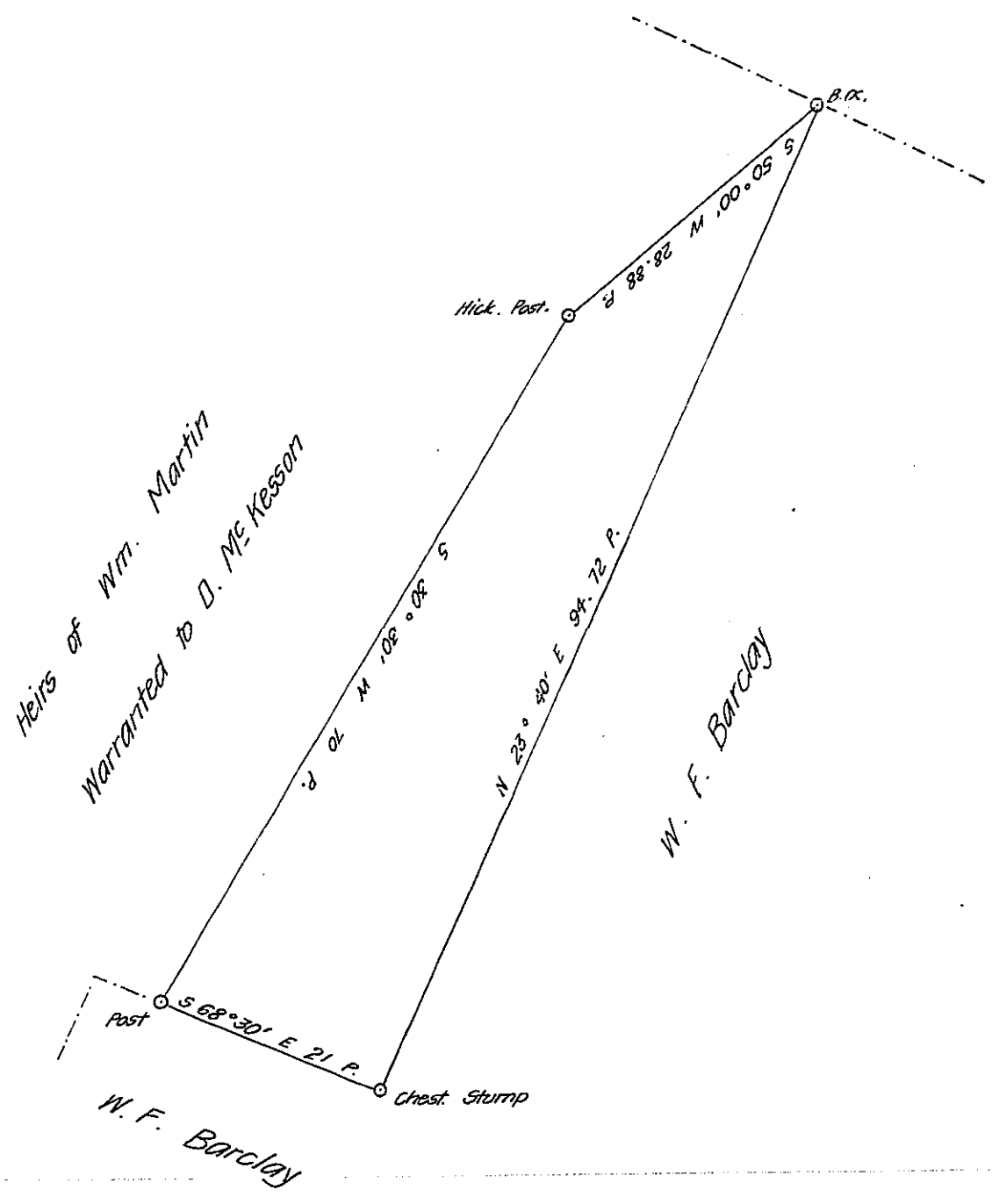


FORM NO. 1.

Mrs. Margaret Stewart



A DRAFT of a tract of land situated in the Township of Center and County of Indiana, containing Seven (7) acres 136 perches and allowance of six per cent. for roads, etc. surveyed the 2nd day of May 1896 in pursuance of a warrant granted to W. F. Barclay dated the 3rd day of March 1896

D. L. Moorhead County Surveyor

To James W. Latta, Esq.,

Secretary of Internal Affairs

IN TESTIMONY that the above is a copy of the original remaining on file in the Department of Internal Affairs of Pennsylvania, made conformably to an Act of Assembly approved the 16th day of February 1833, I have hereunto set my hand and caused the Seal of said Department to be affixed at Harrisburg, this eighteenth day of January 1908

*Henry Howell*  
Secretary of Internal Affairs.